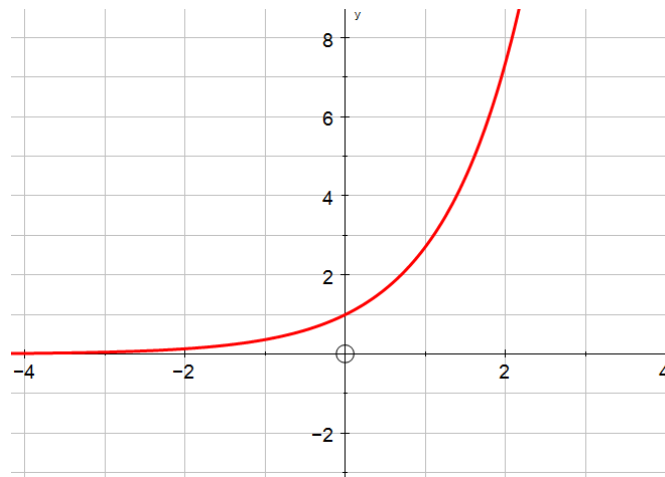


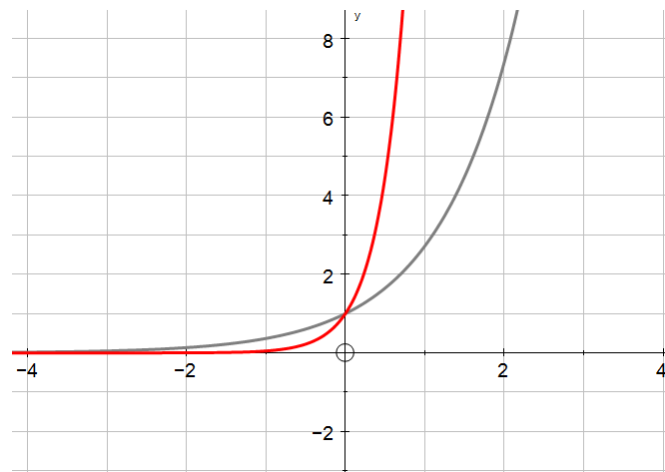
$$f(x) = 2e^{3x} - 1$$

Find the range of $f(x)$.

Begin by sketching $f(x) = e^x$

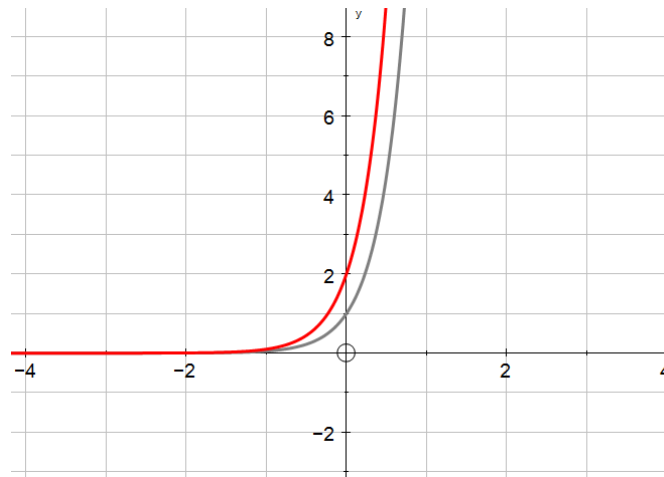


Now sketch $f(x) = e^{3x}$

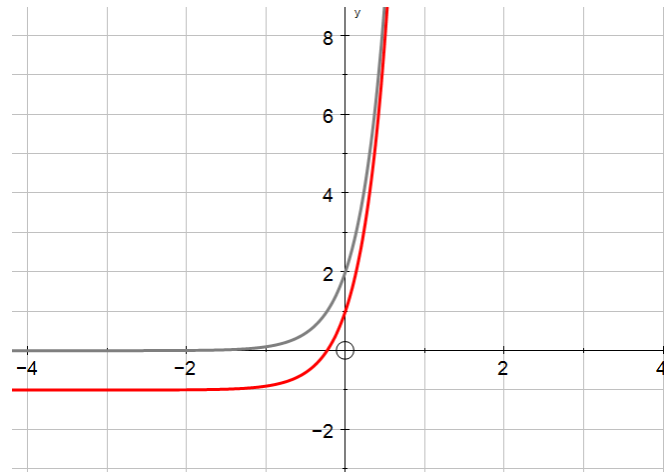


Continues overleaf...

Now sketch $f(x) = 2e^{3x}$



Now sketch $f(x) = 2e^{3x} - 1$



Now state the range of y values that the function takes.

Now try $f(x) = 2e^{3x-1}$

Now try $f(x) = |2e^{3x-1}|$

Now try $f(x) = 2e^{|3x-1|}$

Now try $f(x) = 2e^{|3x|} - 1$